

Commissioned by David Rogers and Walled Lake Central High School

# each moment should be lived fully

*Dedicated to the students of the 2020-2021 Walled Lake Central Wind Symphony and made possible by generous gifts from the parents of those amazing students who never gave up*

(2021)

For Wind Ensemble

Grade 4

Brooke Pierson (ASCAP)



**TAURUS MUSIC PUBLISHING**  
Brooke Pierson Music

Perusal Score

[www.brookepierson.com](http://www.brookepierson.com)

## Instrumentation

Flute 1  
Flute 2  
Oboe  
Bassoon\*  
Clarinet in Bb 1  
Clarinet in Bb 2  
Clarinet in Bb 3  
Bass Clarinet\*  
Alto Saxophone 1  
Alto Saxophone 2  
Tenor Saxophone  
Baritone Saxophone

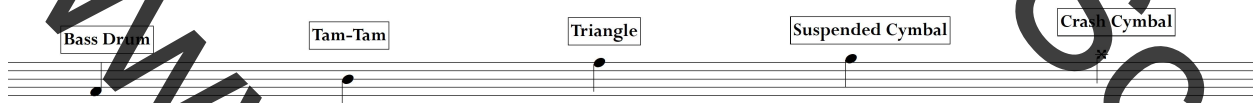
Trumpet in Bb 1-2  
Trumpet in Bb 3-4  
Horn in F 1-2  
Horn in F 3-4  
Trombone 1  
Trombone 2  
Trombone 3 - (opt. pitches for bass trombone)  
Euphonium  
Tuba\*

\*These instruments call for occasional divisi. When no divisi is available due to instrumentation, defer to the lowest note, except with tuba. Also note: Bb tubas without a 5th valve may not be able to reach the lowest marked notes. In this cases, defer to the higher note.

## Percussion 8 players

Piano  
Timpani - 4 drums  
Chimes/Bells  
*Bells hard plastic mallet*  
Vibraphone/Bells (can share the bells)  
*Vib. soft yarn mallet*  
*Bells hard plastic mallet*  
Marimba  
*Medium yarn mallet*  
Percussion 1: Snare Drum/High-Hat\*

Percussion 2 (two players): Bass Drum/Tam-Tam, Triangle, Crash Cymbals, Suspended Cymbals



\*When opening on the high hat, do not fully open. Just enough for it to 'sizzle'.

## Program Notes

Commissioned by David Rogers and Walled Lake Central High School

Dedicated to the students of the 2020-2021 Walled Lake Central Wind Symphony and made possible by generous gifts from the parents of those amazing students who never gave up.

Practically since the day my son Jack was born I dreamed of having him in my band with me. He was a typical band director's kid, he and his little sister, Kathryn, dragged in tow to all of the band events his entire life. Luckily for me the band turned out to be something he loved too. The day my son walked into my band room as a member for the first time instead of the director's son reinvigorated me as a teacher, and led to an even deeper bond between us than we had already had. I knew for a while that I wanted to have a piece commissioned to honor this special time we have had together, this unique time in both of our lives, and I especially looked forward to the 2020-2021 school year; the one year both of my children would be in my bands together. When Covid-19 occurred midway through his junior year, it jeopardized everything. Fear of losing almost half of this special time with my son dominated my thoughts and it is really where this composition went from a good idea to a must. I asked Brooke to compose a piece that wasn't overly celebratory, nor overtly melancholy, rather a piece that reflected the reality that life brings both and each time has its place. This time with my son has been some of the happiest of my career. Covid-19 has deeply impacted this time together and taken so many things away, but it has not halted us. It has caused us to stop, reflect, and cherish the daily moments we have together and it has made me dig deeper into finding ways to make this year special for all of my students.

I would be remiss if I didn't share my deepest condolences for those who have lost loved ones to the Covid-19 Virus.

- David Rogers, Director of Bands, Walled Lake Central High School

## Conductor Notes

Staccato: There are numerous passages with repeated staccato patterns and ostinato (such as mm22). Take care to not perform those too short - allow them room to resonate. In these sections, piano ostinato should also have a lightness to it, rather than a legato feel. The "Shimmering" sections should, in general, be a juxtaposition of sustained chords and light ambience.

# each moment should be lived fully

Brooke Pierson (ASCAP)

Rubato (freely) ♩ = 62

*rit.* *a tempo*

Flute 1 *solo* *p*

Flute 2 **4/4** **5/4** **4/4**

Oboe

Bassoon

Clarinet in B $\flat$  1 *solo* *pp*

Clarinet in B $\flat$  2 *solo* *pp*

Clarinet in B $\flat$  3 **4/4** **5/4** **4/4** *p* *solo*

Bass Clarinet *p*

Alto Sax 1 *solo* *p* *rit.* *a tempo* *mp* *p*

Alto Sax 2 **4/4** **5/4** **4/4** *p* *solo* *mp* *p*

Tenor Sax *p* *mp* *p*

Baritone Sax *mp* *p*

Trumpet in B $\flat$  1-2 *solo* *p* *rit.* *a tempo* *mp*

Trumpet in B $\flat$  3-4 **4/4** **5/4** **4/4**

Horn in F 1-2 *mp* *p*

Horn in F 3-4 *mp* *p*

Trombone 1 *mp* *p*

Trombone 2 *mp*

Trombone 3 *mp*

Euphonium **4/4** **5/4** **4/4** *mp*

Tuba *mp*

Piano *p* *rit.* *a tempo*

Timpani (F, Ab, D, F)

Chimes/Bells **4/4** **5/4** **4/4**

Vibraphone/Bells

Marimba

Percussion 1

Percussion 2



14

Fl. 1 *mp* 1 only

Fl. 2 *mp* 1 only 7

Ob.

Bsn.

B♭ Cl. 1 *mp* tutti

B♭ Cl. 2 *mp* tutti

B♭ Cl. 3

B. Cl.

A. Sx. 1 Horn in F 1-2 *mf*

A. Sx. 2 Horn in F 1-2 *mf*

T. Sx.

B. Sx.

14

B♭ Tpt. 1-2 *p* *mp* tutti straight mute

B♭ Tpt. 3-4

Hrn. 1-2 *mf* tutti *mf*

Hrn. 3-4 *mf* tutti *mf*

Tbn. 1 *mf* solo

Tbn. 2 *mp*

Tbn. 3 *mp*

Euph. *mp*

Tuba *mp*

Pno. *mp*

14

Timp. *mp* *pp*

Chm. *mp*

Vib./Bells *mp*

Mar. *mp*

14

Perc. 1

Perc. 2 *mp*

www.prooketpianos.com

21

Fl. 1 *mf* *p* *mp* *mf* *tutti*

Fl. 2 *p* *mp* *mf* *tutti*

Ob. *mf*

Bsn.

B♭ Cl. 1 *mf*

B♭ Cl. 2 *mf*

B♭ Cl. 3 *mf* *tutti*

B. Cl. *mp* *mf*

A. Sx. 1 *mp* *tutti* *mf*

A. Sx. 2 *mp* *tutti* *mf*

T. Sx.

B. Sx. *mf*

21

B♭ Tpt. 1-2 *p* *mp* *p* *mp*

B♭ Tpt. 3-4 *mp* *mp* *mf*

Hn. 1-2 *f*

Hn. 3-4 *f*

Tbn. 1 *f*

Tbn. 2

Tbn. 3

Euph. *mf*

Tuba

21

Pno. *mp*

21

Timp. *mp* *pp*

Chm. *Bells*

Vib./Bells

Mar.

21

Perc. 1 *High-Hat* *pp* *mp*

Perc. 2 *mp*

28

Fl. 1

Fl. 2

Ob.

Bsn. *mp* *mf* *cresc.*

B♭ Cl. 1 *cresc.*

B♭ Cl. 2 *cresc.*

B♭ Cl. 3

B. Cl. *div. mp mf*

A. Sx. 1 *cresc.*

A. Sx. 2 *cresc.*

T. Sx. *mf mp mf cresc.*

B. Sx. *mp mf*

open

B♭ Tpt. 1-2 *mf cresc.*

B♭ Tpt. 3-4 *mf cresc.*

Hn. 1-2 *mf cresc.*

Hn. 3-4 *mf*

Tbn. 1 *mf cresc.*

Tbn. 2 *mp mf cresc.*

Tbn. 3 *mp mf cresc.*

Euph. *mp mf cresc.*

Tuba *Bass Clarinet mp mf cresc.*

Pno. *mf cresc.*

28

Timp. *mp*

Chm.

Vib./Bells *mf*

Mar.

28

Perc. 1 *cresc.*

Perc. 2 *mf*



34

Fl. 1

Fl. 2

Ob.

Bsn.

B♭ Cl. 1

B♭ Cl. 2

B♭ Cl. 3

B. Cl.

A. Sax. 1

A. Sax. 2

T. Sax.

B. Sax.

B♭ Tpt. 1-2

B♭ Tpt. 3-4

Hrn. 1-2

Hrn. 3-4

Tbn. 1

Tbn. 2

Tbn. 3

Euph.

Tuba

Pno.

34

Timp.

Chm.

Vib./Bells

Mar.

34

Perc. 1

Perc. 2

www.p10kpercussion.com

B

Fl. 1 *mf*

Fl. 2 *mp* *mf*

Ob. *mp*

Bsn. *mf* *mp* *mf*

B♭ Cl. 1 *tutti* *mf* *mp*

B♭ Cl. 2 *mf* *mp*

B♭ Cl. 3 *mf* *mp*

B. Cl. *mf* *mp*

A. Sx. 1 *mp*

A. Sx. 2 *mp*

T. Sx. *mp*

B. Sx. *mf*

B♭ Tpt. 1-2 *mp* *mf*

B♭ Tpt. 3-4 *mp* *mf* *p*

Hrn. 1-2 *mf* *mp* *mf*

Hrn. 3-4 *mf* *mp* *mf*

Tbn. 1 *mf* *mp* *mf*

Tbn. 2 *mf* *mp* *mf*

Tbn. 3 *mf* *mp* *mf*

Euph. *mf* *mp*

Tuba *mf* *mp* *mf*

Pno. *mf* *mp* *mf*

Timp. *mf* *mp* *mf*

Chm. *mf* *Chimes*

Vib./Bells *mp*

Mar. *mp*

Perc. 1 *mp* *mf* *Strike with mallet*

Perc. 2 *mp* *Strike with mallet*

www.pbr.com  
Percussion Score

Musical score for orchestra and piano, measures 45-50. The score includes parts for Flutes 1 and 2, Oboe, Bassoon, Clarinets (Bb, Bb, Bb, B), Saxophones (Alto, Tenor, Baritone), Trumpets (Bb), Horns (F), Trombones (Bb), Euphonium, Tuba, Piano, Timpani, Chimes, Vibraphone/Bells, and Maracas. The score features various dynamics such as *mp*, *p*, *mf*, and *cresc.* (crescendo). A large watermark 'www.prooketpianist.com' is overlaid diagonally across the page.

This page contains the musical score for measures 50 to 54. The instruments and their parts are as follows:

- Flutes:** Fl. 1 and Fl. 2. Measure 50 starts with a dynamic of *f*. Measure 51 transitions to *mf*.
- Oboe:** Ob. Measure 50 starts with *f*, measure 51 with *mf*.
- Bassoon:** Bsn. Measure 50 starts with *f*, measure 51 with *mf*.
- Clarinets:** B♭ Cl. 1, B♭ Cl. 2, B♭ Cl. 3, and B. Cl. Measure 50 starts with *f*. B♭ Cl. 3 includes a 'div.' (divisi) instruction. Measure 51 transitions to *mf*. Measures 52-54 transition to *mp*.
- Saxophones:** A. Sx. 1, A. Sx. 2, T. Sx., and B. Sx. Measure 50 starts with *f*. Measure 51 transitions to *mf*.
- Brass:**
  - B♭ Tpt. 1-2 and B♭ Tpt. 3-4: Measure 50 starts with *f*, measure 51 with *mf*.
  - Horns (Hn. 1-2 and Hn. 3-4): Measure 50 starts with *f*, measure 51 with *mf*.
  - Tbn. 1, Tbn. 2, and Tbn. 3: Measure 50 starts with *f*, measure 51 with *mf*.
  - Euph. and Tuba: Measure 50 starts with *f*, measure 51 with *mf*. A note for Euph. in measure 52 is labeled 'Horn in F 1-2'.
- Piano:** Pno. Measure 50 starts with *f dim.*, measure 51 with *mf*.
- Timpani:** Timp. Measure 50 starts with *f*, measure 51 with *mf*.
- Percussion:** Chm., Vib./Bells, Mar., Perc. 1, and Perc. 2. Vib./Bells, Mar., Perc. 1, and Perc. 2 start measure 50 with *f dim.*.

55

rit.

Fl. 1

Fl. 2

Ob.

Bsn.

B♭ Cl. 1

B♭ Cl. 2

B♭ Cl. 3

B. Cl.

A. Sx. 1

A. Sx. 2

T. Sx.

B. Sx.

55

rit.

B♭ Tpt. 1-2

B♭ Tpt. 3-4

Hrn. 1-2

Hrn. 3-4

Tbn. 1

Tbn. 2

Tbn. 3

Euph.

Tuba

55

rit.

Pno.

Timp.

Chm.

Vib./Bells

Mar.

Perc. 1

Perc. 2





69

Fl. 1

Fl. 2

Ob.

Bsn.

B♭ Cl. 1

B♭ Cl. 2

B♭ Cl. 3

B. Cl.

A. Sx. 1

A. Sx. 2

T. Sx.

B. Sx.

B♭ Tpt. 1-2

B♭ Tpt. 3-4

Hn. 1-2

Hn. 3-4

Tbn. 1

Tbn. 2

Tbn. 3

Euph.

Tuba

Pno.

Timp.

Chm.

Vib./Bells

Mar.

Perc. 1

Perc. 2

*p*

*mf*

*mp*

*n*

*tutti*

*1 only*

Tuba





E

83

Fl. 1

Fl. 2

Ob.

Bsn.

B♭ Cl. 1

B♭ Cl. 2

B♭ Cl. 3

B. Cl.

A. Sx. 1

A. Sx. 2

T. Sx.

B. Sx.

83

B♭ Tpt. 1-2

B♭ Tpt. 3-4

Hrn. 1-2

Hrn. 3-4

Tbn. 1

Tbn. 2

Tbn. 3

Euph.

Tuba

Pno.

83

Timp.

Chm.

Vib./Bells

Mar.

83

Perc. 1

Perc. 2

mp pp

mp pp

mp pp

p

solo mp pp

solo mp pp

mp pp

mp pp

p

mp pp

p

p

p

mp pp

p

p

p

8ma

(D to Eb)

Bells

Vib.

p

p

f

f

pp

pp

www.brakepieces.com

each moment should be lived fully

accel.

rit.

F Shimmering (♩ = ca. 144)

91

Fl. 1

Fl. 2

Ob.

Bsn.

3/4

B♭ Cl. 1

B♭ Cl. 2

B♭ Cl. 3

B. Cl.

3/4

accel.

rit.

F Shimmering (♩ = ca. 144)

A. Sx. 1

A. Sx. 2

T. Sx.

B. Sx.

3/4

91

accel.

rit.

F Shimmering (♩ = ca. 144)

B♭ Tpt. 1-2

B♭ Tpt. 3-4

Hr. 1-2

Hr. 3-4

Tbn. 1

Tbn. 2

Tbn. 3

Euph.

Tuba

3/4

91

accel.

rit.

F Shimmering (♩ = ca. 144)

Pno.

L.H. p cresc.

91

Timp.

Chm.

Vib./Bells

Mar.

91

Perc. 1

Perc. 2

3/4

p

cresc.

p

cresc.

p

cresc.

101

Fl. 1

Fl. 2

Ob.

Bsn.

B $\flat$  Cl. 1

B $\flat$  Cl. 2

B $\flat$  Cl. 3

B. Cl.

A. Sx. 1

A. Sx. 2

T. Sx.

B. Sx.

101

B $\flat$ Tpt. 1-2

B $\flat$ Tpt. 3-4

Hrn. 1-2

Hrn. 3-4

Tbn. 1

Tbn. 2

Tbn. 3

Euph.

Tuba

101

Pno.

101

Timp.

Chm.

Vib./Bells

Mar.

101

Perc. 1

Perc. 2

*p*

*p*

div.

*p*

*p*

*p*

*p*

*p*

*p*

*p*

*p*

*p*

*p*

*mp*

*p*

*n*

*mp*

*mp*

*mp*

*pp*

Chimes

Triangle

*pp*

each moment should be lived fully

G

109

Fl. 1

Fl. 2

Ob.

Bsn.

B $\flat$  Cl. 1

B $\flat$  Cl. 2

B $\flat$  Cl. 3

B. Cl.

A. Sx. 1

A. Sx. 2

T. Sx.

B. Sx.

109

B $\flat$  Tpt. 1-2

B $\flat$  Tpt. 3-4

Hn. 1-2

Hn. 3-4

Tbn. 1

Tbn. 2

Tbn. 3

Euph.

Tuba

109

Pno.

109

Timp.

Chm.

Vib./Bells

Mar.

109

Perc. 1

Perc. 2

*mp* solo Alto Sax 1

*p*

117

Fl. 1 *mp* *mf*

Fl. 2 *mp* *mf*

Ob.

Bsn. *mf*

B♭ Cl. 1 *tutti* *mp* *mf*

B♭ Cl. 2 *mp* *mf*

B♭ Cl. 3 *mp* *mf*

B. Cl.

A. Sx. 1 *tutti* *mf*

A. Sx. 2 *tutti* *mp* *mf* *mp*

T. Sx. *mp* *mf*

B. Sx.

117

B♭ Tpt. 1-2

B♭ Tpt. 3-4

Hr. 1-2

Hr. 3-4

Tbn. 1

Tbn. 2

Tbn. 3

Euph.

Tuba

117

Pno. *cresc.* *mf*

117

Timp. *mf* (Eb to Db)

Chm. *mf* Bells

Vib./Bells *cresc.* *mf*

Mar. *cresc.* *mf*

117

Perc. 1 *mp* *mf*

Perc. 2 *cresc.* *mf*

www.prokeys.com

H

Fl. 1

Fl. 2 *cresc.* *mf*

Ob. *mf cresc.* *mf*

Bsn. *cresc.*

B♭ Cl. 1

B♭ Cl. 2

B♭ Cl. 3

B. Cl. *mf cresc.*

A. Sx. 1 *mf cresc.*

A. Sx. 2 *mf cresc.*

T. Sx. *cresc.*

B. Sx. *mp cresc.*

B♭ Tpt. 1-2 *mf*

B♭ Tpt. 3-4 *mf cresc.*

Hrn. 1-2 *mf cresc.*

Hrn. 3-4 *mf cresc.*

Tbn. 1

Tbn. 2 *mf cresc.*

Tbn. 3 *mp cresc.*

Euph. *mp cresc.*

Tuba *mf cresc.*

Pno. *cresc.*

125 Timp. *mf cresc.*

Chm.

Vib./Bells *cresc.*

Mar. *cresc.*

125 Perc. 1 High-Hat *mf*

Perc. 2 *mf cresc.*

132 I

Fl. 1

Fl. 2

Ob.

Bsn.

B♭ Cl. 1

B♭ Cl. 2

B♭ Cl. 3

B. Cl.

A. Sx. 1

A. Sx. 2

T. Sx.

B. Sx.

132 I

B♭ Tpt. 1-2

B♭ Tpt. 3-4

Hr. 1-2

Hr. 3-4

Tbn. 1

Tbn. 2

Tbn. 3

Euph.

Tuba

132 I

Pno.

132

Timp.

Chm. Chimes

Vib./Bells

Mar.

132

Perc. 1

Perc. 2

www.pianokeyscores.com

138

Fl. 1

Fl. 2

Ob.

Bsn.

B♭ Cl. 1

B♭ Cl. 2

B♭ Cl. 3

B. Cl.

A. Sx. 1

A. Sx. 2

T. Sx.

B. Sx.

B♭ Tpt. 1-2

B♭ Tpt. 3-4

Hrn. 1-2

Hrn. 3-4

Tbn. 1

Tbn. 2

Tbn. 3

Euph.

Tuba

Pno.

Timp.

Chm.

Vib./Bells

Mar.

Perc. 1

Perc. 2

mf

f

ff

div.

(D♭ to E♭)

S.D.



J

144

Fl. 1

Fl. 2

Ob.

Bsn.

B♭ Cl. 1

B♭ Cl. 2

B♭ Cl. 3

B. Cl.

A. Sx. 1

A. Sx. 2

T. Sx.

B. Sx.

B♭ Tpt. 1-2

B♭ Tpt. 3-4

Hr. 1-2

Hr. 3-4

Tbn. 1

Tbn. 2

Tbn. 3

Euph.

Tuba

Pno.

Timp.

Chm.

Vib./Bells

Mar.

Perc. 1

Perc. 2

mf

f

(Eb to D)

www.projectorlibris.com

152

Fl. 1

Fl. 2

Ob.

Bsn.

B♭ Cl. 1

B♭ Cl. 2

B♭ Cl. 3

B. Cl.

A. Sax. 1

A. Sax. 2

T. Sax.

B. Sax.

152

B♭ Tpt. 1-2

B♭ Tpt. 3-4

Hrn. 1-2

Hrn. 3-4

Tbn. 1

Tbn. 2

Tbn. 3

Euph.

Tuba

152

Pno.

152

Timp.

Chm.

Vib./Bells

Mar.

152

Perc. 1

Perc. 2

www.prokeyscores.com

K

160

Fl. 1

Fl. 2

Ob.

Bsn.

B♭ Cl. 1

B♭ Cl. 2

B♭ Cl. 3

B. Cl.

A. Sax. 1

A. Sax. 2

T. Sax.

B. Sax.

B♭ Tpt. 1-2

B♭ Tpt. 3-4

Hrn. 1-2

Hrn. 3-4

Tbn. 1

Tbn. 2

Tbn. 3

Euph.

Tuba

Pno.

160

Timp.

Chm.

Vib./Bells

Mar.

160

Perc. 1

Perc. 2

mf

f

Bells

High-Hat

4/4

3/4

mf

f

www.profilescore.com

166

Fl. 1

Fl. 2

Ob.

Bsn.

B♭ Cl. 1

B♭ Cl. 2

B♭ Cl. 3

B. Cl.

A. Sax. 1

A. Sax. 2

T. Sax.

B. Sax.

166

B♭ Tpt. 1-2

B♭ Tpt. 3-4

Hrn. 1-2

Hrn. 3-4

Tbn. 1

Tbn. 2

Tbn. 3

Euph.

Tuba

166

Pno.

166

Timp. (D to Eb, F to Gb)

Chm.

Vib./Bells

Mar.

166

Perc. 1

Perc. 2

www.projectpercussion.com

This musical score page contains 15 staves of music, numbered 172 to 176. The instruments are arranged as follows:

- Fl. 1
- Fl. 2
- Ob.
- Bsn.
- B♭ Cl. 1
- B♭ Cl. 2
- B♭ Cl. 3
- B. Cl.
- A. Sax. 1
- A. Sax. 2
- T. Sax.
- B. Sax.
- B♭ Tpt. 1-2
- B♭ Tpt. 3-4
- Hn. 1-2
- Hn. 3-4
- Tbn. 1
- Tbn. 2
- Tbn. 3
- Euph.
- Tuba
- Pno.
- Timp.
- Chm.
- Vib./Bells
- Mar.
- Perc. 1
- Perc. 2

Key features of the score include:

- Measures 172-176 are marked with a box containing the number 172.
- Dynamic markings such as *cresc.* and *ff* are present throughout.
- Tempo changes are indicated by large numbers 4/4 and 3/4.
- Performance instructions like *vall* and *vall* are included.
- A large watermark "www.popscore.com" is overlaid diagonally across the page.

178

Fl. 1

Fl. 2

Ob.

Bsn.

B♭ Cl. 1

B♭ Cl. 2

B♭ Cl. 3

B. Cl.

A. Sx. 1

A. Sx. 2

T. Sx.

B. Sx.

178

B♭ Tpt. 1-2

B♭ Tpt. 3-4

Hrn. 1-2

Hrn. 3-4

Tbn. 1

Tbn. 2

Tbn. 3

Euph.

Tuba

178

Pno.

178

Timp.

Chm.

Vib./Bells

Mar.

178

Perc. 1

Perc. 2

www.prokeys.com

This page contains the musical score for measures 184 through 188. The score is arranged in a standard orchestral format with the following parts:

- Flutes (Fl. 1, Fl. 2):** Treble clef, key signature of one sharp (F#). Measures 184-185 have whole rests. Measures 186-188 play a melodic line with a slur and a fermata over the final measure.
- Oboe (Ob.):** Treble clef, key signature of one sharp. Measures 184-185 have whole rests. Measures 186-188 play a melodic line with a slur and a fermata.
- Bassoon (Bsn.):** Bass clef, key signature of one sharp. Measures 184-185 have whole rests. Measures 186-188 play a melodic line with a slur and a fermata. A "div." (divisi) marking is present at the start of measure 186.
- B♭ Clarinets (B♭ Cl. 1, 2, 3):** Treble clef, key signature of two sharps (F#, C#). Measures 184-185 have whole rests. Measures 186-188 play a melodic line with a slur and a fermata.
- Bass Clarinet (B. Cl.):** Treble clef, key signature of two sharps. Measures 184-185 have whole rests. Measures 186-188 play a melodic line with a slur and a fermata. A "div." (divisi) marking is present at the start of measure 186.
- Alto Saxophones (A. Sx. 1, 2):** Treble clef, key signature of two sharps. Measures 184-185 play a melodic line starting with a forte (*f*) dynamic. Measures 186-188 have whole rests. Measures 189-190 play a melodic line starting with a mezzo-forte (*mf*) dynamic.
- Tenor Saxophone (T. Sx.):** Treble clef, key signature of two sharps. Measures 184-185 have whole rests. Measures 186-188 play a melodic line with a slur and a fermata. A forte (*f*) dynamic is present at the start of measure 186.
- Bass Saxophone (B. Sx.):** Treble clef, key signature of two sharps. Measures 184-185 have whole rests. Measures 186-188 play a melodic line with a slur and a fermata.
- B♭ Trumpets (B♭ Tpt. 1-2, 3-4):** Treble clef, key signature of two sharps. Measures 184-185 play a rhythmic pattern starting with a forte (*f*) dynamic. Measures 186-188 have whole rests. Measures 189-190 play a melodic line starting with a mezzo-forte (*mf*) dynamic.
- Horn 1 (Hn. 1):** Treble clef, key signature of two sharps. Measures 184-185 play a melodic line starting with a forte (*f*) dynamic. Measures 186-188 have whole rests. Measures 189-190 play a melodic line starting with a mezzo-forte (*mf*) dynamic.
- Horn 2 (Hn. 2):** Treble clef, key signature of two sharps. Measures 184-185 play a melodic line starting with a forte (*f*) dynamic. Measures 186-188 have whole rests. Measures 189-190 play a melodic line starting with a mezzo-forte (*mf*) dynamic.
- Trumpet 1 (Tbn. 1):** Bass clef, key signature of two sharps. Measures 184-185 play a melodic line starting with a forte (*f*) dynamic. Measures 186-188 have whole rests. Measures 189-190 play a melodic line starting with a mezzo-forte (*mf*) dynamic.
- Trumpet 2 (Tbn. 2):** Bass clef, key signature of two sharps. Measures 184-185 have whole rests. Measures 186-188 play a melodic line with a slur and a fermata. A forte (*f*) dynamic is present at the start of measure 186.
- Trumpet 3 (Tbn. 3):** Bass clef, key signature of two sharps. Measures 184-185 have whole rests. Measures 186-188 play a melodic line with a slur and a fermata. A forte (*f*) dynamic is present at the start of measure 186.
- Euphonium (Euph.):** Bass clef, key signature of two sharps. Measures 184-185 have whole rests. Measures 186-188 play a melodic line with a slur and a fermata. A forte (*f*) dynamic is present at the start of measure 186.
- Tuba:** Bass clef, key signature of two sharps. Measures 184-185 have whole rests. Measures 186-188 play a melodic line with a slur and a fermata. A forte (*f*) dynamic is present at the start of measure 186.
- Piano (Pno.):** Grand staff, key signature of one sharp. Measures 184-188 play a rhythmic accompaniment of eighth notes.
- Timpani (Timp.):** Bass clef, key signature of one sharp. Measures 184-185 have whole rests. Measures 186-188 play a melodic line with a slur and a fermata. A forte (*f*) dynamic is present at the start of measure 186.
- Chimes (Chm.):** Treble clef, key signature of one sharp. Measures 184-185 have whole rests. Measures 186-188 play a melodic line with a slur and a fermata. A forte (*f*) dynamic is present at the start of measure 186. A "Chimes" marking is present at the start of measure 186.
- Vibraphone/Bells (Vib./Bells):** Treble clef, key signature of one sharp. Measures 184-188 play a rhythmic accompaniment of eighth notes.
- Maracas (Mar.):** Treble clef, key signature of one sharp. Measures 184-188 play a rhythmic accompaniment of eighth notes.
- Percussion 1 (Perc. 1):** Percussion clef, key signature of one sharp. Measures 184-185 play a rhythmic pattern starting with a forte (*f*) dynamic. Measures 186-188 have whole rests. Measures 189-190 play a rhythmic pattern.
- Percussion 2 (Perc. 2):** Percussion clef, key signature of one sharp. Measures 184-185 have whole rests. Measures 186-188 play a melodic line with a slur and a fermata. A forte (*f*) dynamic is present at the start of measure 186.

191 *rall.*

Fl. 1 *mf* *mp*

Fl. 2 *mf* *mp*

Ob. *mf* *mp*

Bsn. *mf* *mp*

B♭ Cl. 1 *mf* *mp*

B♭ Cl. 2 *mf* *mp*

B♭ Cl. 3 *mf* *mp* *mp* *p*

B. Cl. *mf* *mp* *p*

A. Sx. 1 *rall.* *mp* *p*

A. Sx. 2 *mp* *p*

T. Sx. *mf* *mp* *p*

B. Sx. *mf* *mp* *p*

B♭ Tpt. 1-2 *rall.*

B♭ Tpt. 3-4

Hn. 1-2 *mp* *p*

Hn. 3-4 *mp* *p*

Tbn. 1 *mp* *p*

Tbn. 2 *mf* *mp* *p*

Tbn. 3 *mf* *mp* *p*

Euph. *mf* *mp* *p*

Tuba *mf* *mp* *p*

Pno. *mf* *dim.*

Timp. *mf* *mp*

Chm. *mf*

Vib./Bells *mf* *dim.*

Mar. *mf* *dim.*

Perc. 1 *mf* *dim.*

Perc. 2 *mf* *mp*

www.prokopscores.com



M Reflective ♩ = 88

200

Fl. 1

Fl. 2

Ob.

Bsn.

B♭ Cl. 1

B♭ Cl. 2

B♭ Cl. 3

B. Cl.

A. Sax. 1

A. Sax. 2

T. Sax.

B. Sax.

B♭ Tpt. 1-2

B♭ Tpt. 3-4

Hr. 1-2

Hr. 3-4

Tbn. 1

Tbn. 2

Tbn. 3

Euph.

Tuba

Pno.

200

Timp.

Chm.

Vib./Bells

Mar.

200

Perc. 1

Perc. 2

mp dim.

sing

*p*

Ooh

sing

Horn in F 1-2 (play)

sing

*p*

Ooh

sing

solo (play)

sing

*p*

Ooh

mp dim.

mp dim.

mp dim.

mp dim.

mp dim.

*p*

mp dim.

sing

*p*

Ooh

sing

*p*

Ooh

sing

*p*

Ooh

sing

*p*

Ooh

mp

N

211

Fl. 1  
Fl. 2  
Ob.  
Bsn.

211

B♭ Cl. 1  
B♭ Cl. 2  
B♭ Cl. 3  
B. Cl.

N

211

A. Sax. 1  
A. Sax. 2  
T. Sax.  
B. Sax.

211

N

B♭ Tpt. 1-2  
B♭ Tpt. 3-4  
Hrn. 1-2  
Hrn. 3-4  
Tbn. 1  
Tbn. 2  
Tbn. 3  
Euph.  
Tuba

211

N

Pno.

211

Timp.

211

Chm.  
Vib./Bells  
Mar.

211

Perc. 1  
Perc. 2

www.popscores.com